



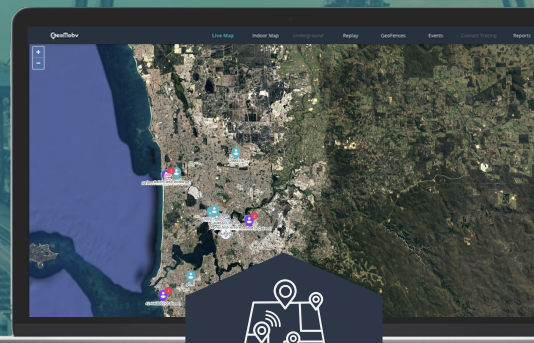
"We launched GeoMoby in 2013 with the aim to bridge the gap between the offline and online worlds while creating new ways to transform location data into business intelligence. Today, with our innovation and expertise in geolocation technologies, we can tackle today's and tomorrow's challenges together.

Location Matters."

Chris Baudia
Founder & CEO
GeoMoby



GeoMoby monitors employees and achieves 20% gain in productivity



GEOFENCING, BEACONS, ACTIVITY MONITORING IN CONSTRUCTION

Global companies on the construction market face common challenges including maintaining high levels of productivity with the key objective to increase efficiency and safety on-site.

Those objectives can be achieved with the help of location services.

Common industry options like RFID or QR codes are unable to support true real-time monitoring and can be costly to implement and maintain.

A global construction and mining engineering company (ASX-listed, AUD80M+ annual revenue) needed to identify and address bottlenecks and irregularities including a high and inconsistent aggregated travel time due to incorrectly placed key maintenance and water containers.

In order to **improve safety, efficiency and on-site productivity**, the engineering company would need to use a new kind of highly accurate monitoring solution. They required a system that could add further value through real-time options like live field reporting and automated timesheet features to synchronize directly with accounting and payroll systems.

After testing multiple manufacturers, GeoMoby™ chose **BLE beacons** for their RF reliability and battery life.

Following the successful pilot using a handful of smartwatches, GeoMoby™ deployed 200 beacons across six sites and helped achieving an estimated **20% gain in productivity**.



200 BEACONS
+20% EFFICIENCY



Safety monitoring of what is happening on-site, at all times, keeping you informed in an efficient way.



Setting-up geofences to **detect employees' location and movements** when entering/exiting predefined areas.



Setting up a **grid of BLE beacons** in order to **monitor activity in real-time**.



Monitor productivity and **send safety alerts** when needed.



Advanced **Live tracking technologies**

The next generation of geofencing technologies allowing **very high precision** detection both indoors & outdoors with a negligible impact on the device battery.



Why Us?

GeoMoby™ spent years in R&D, achieved **20 times better geofencing accuracy** than industry standards and delivered innovative **cross-environment live-tracking intelligence**.